

# OTHER USES OF TTE

## Spotting simple shunts

### Atrial septal defect (ASD)

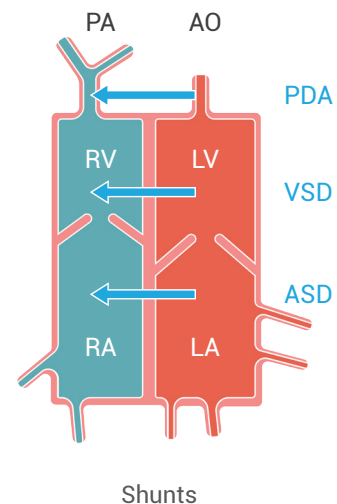
#### Check:

- Position
- Direction and size of shunt
- Right ventricular size and function
- Pulmonary artery systolic pressure
- Other congenital abnormalities

### Congenital ventricular septal defect (VSD)

#### Check:

- Position
- Direction and size of shunt
- Left ventricular size and function
- Pulmonary artery systolic pressure
- Other congenital abnormalities



### Ventricular septal rupture

This can occur following myocardial infarction. Assess as for a congenital lesion but interpret your findings carefully, the patient may be, or become, hemodynamically unstable, and an urgent intervention may be required.

### Patent ductus arteriosus (PDA)

If you find a PDA check the shunt size and direction, the left ventricle, the pulmonary artery, and pulmonary artery systolic pressures, and see if you can image the PDA in both the suprasternal and parasternal views.